

MB 700 frost protected connection



Description

The Emergency Safety Shower it self is protected against frost and suitable for outdoor use. The water supply pipe from the supply to the Safety Shower needs to be protected against frost (cold temperatures). This is something you can organize your self, but we can offer you also a suitable solution.

We are able to supply you with a ready to use frost protected connection piece which is insulated and electrical trace tape heated. This can be easily connectie with 1" of 1 1/4" screwthread onto the water spul pipe which is most likely positioned under the ground. On the other side there is an easy connection piece for a quick connection on to the Safety Shower. When the water supply pipe is not positioned under the ground, we also have suitable solutions and we are able to make the MB 700 piece in a way you desire.

When you rather have a more simple solution, than this is also possible and you can see an example next to this option, knowing extra tracing. This extra length of tracing you can apply along the water supply pipe and afterwards you only need to insulate this pipe piece. This last mentioned point has been covered within our model MB 700!

All measures have been made for connection in the supplied junction box (clamps and cable glands are present) for the electrical connection of the MB 700. This means that not only the water supply is very easy to make, but also the electrical connection.

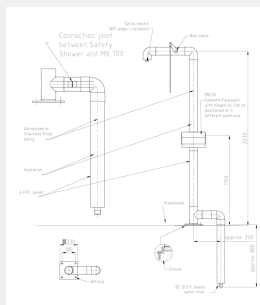
This option is recommended by us for our trace tape heated models like; MB 250 / MB 200 / MB 60 / MB 65 / etc. to be added, but is also possible with other models from us, like for example our Tank Showers series or to be supplied as separate pieces with a length of your choice.

The power of the standard MB 700 is 25 Watt per meter and can be connectie standard on to 230 V (other specificaties are possible). A thermostat can be supplied as well when you like. This option is also available in a Flame Proof / ATEX. Further this module can be supplied in a galvanized version, but also in Stainless Steel.

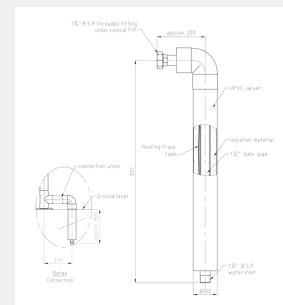
In short a simple solution to protect the complete version (Safety Shower and supply pipe) against frost!



MB 700 frost protected connection



MB 700 frost protected connection



MB 700 frost protected connection